

10th Gifted World Lit

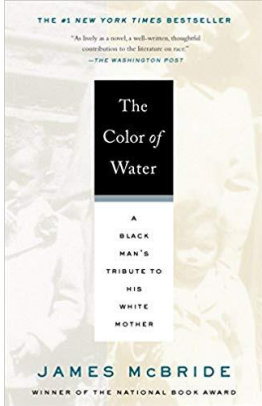
Starr's Mill High School

Ms. Collins (collins.ashley@mail.fcboe.org). Mr. Genovese (genovese.shad@mail.fcboe.org)

Fall 2019

Summer Reading Assignments

***The Color of Water*, by James McBride (ISBN-10: 9781594481925)**

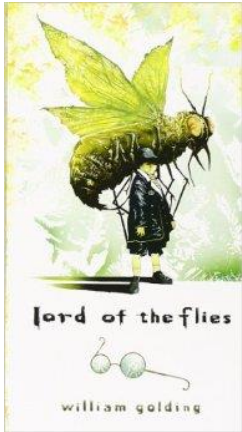


From Barnes & Noble:

The son of a black minister and a woman who would not admit she was white, James McBride grew up in "orchestrated chaos" with his eleven siblings in the poor, all-black projects of Red Hook, Brooklyn. "Mommy," a fiercely protective woman with "dark eyes full of pep and fire," herded her brood to Manhattan's free cultural events, sent them off on buses to the best (and mainly Jewish) schools, demanded good grades, and commanded respect. As a young man, McBride saw his mother as a source of embarrassment, worry, and confusion—and reached thirty before he began to discover the truth about her early life and long-buried pain.

Assignment 1: Complete the attached Written Quiz, paying close attention to the prompt and requirements.

***Lord of the Flies*, by William Golding (ISBN 0-399-50148-7)**



From Amazon.com:

Before *The Hunger Games* there was *Lord of the Flies*

Lord of the Flies remains as provocative today as when it was first published in 1954, igniting passionate debate with its startling, brutal portrait of human nature. Though critically acclaimed, it was largely ignored upon its initial publication. Yet soon it became a cult favorite among both students and literary critics who compared it to J.D. Salinger's *The Catcher in the Rye* in its influence on modern thought and literature.

Labeled a parable, an allegory, a myth, a morality tale, a parody, a political treatise, even a vision of the apocalypse, *Lord of the Flies* has established itself as a true classic.

Assignment 2: Acrostic poem formed by the character's name that analyzes the character using at least two different poetic devices (such as simile, personification, metaphor, vivid imagery, meter, rhyme, etc.). Please

label them with a color-coded key on the same page as the poem (not on the back). (10 points)

Assignment 3: Create a picture of the character – Your picture should be a symbolic representation of the character – not just a picture of a boy. Your creative picture should demonstrate that you've read the book and know the character (must be more than copy and paste a single picture from the internet or magazine). Get creative! (10 points)

Summer Reading – Written Quiz

Task: In *The Color of Water*, James McBride struggles to form his own identity. Using TWO QUOTATIONS from the memoir, explain his struggle and the process through which he ultimately discovers the man he wants to be. You will be graded on the attached rubric. Your extended paragraph should be typed, double-spaced, Times New Roman 12 pt. font.

Guidelines: Response must be a single, detailed paragraph complete with targeted and focused topic sentence, specific details, and thorough concluding sentence that wraps up your entire argument.

Suggestion: Write with enough detail so that no questions are necessary. Consistently adhere to your topic sentence.

Point Value: 50 points

Note: Although this is only one detailed paragraph, spelling and grammar do count.

	5	4 3	2 1 0	Points Earned
Topic Sentence	Clearly identifiable and arguable. Properly introduces the entire response with distinct direction.	Moderately identifiable. Introduces the topic to be discussed, but lacks direction and/or arguability.	No clear topic sentence. May or may not state the topic. No direction; nothing points the way. Cannot be argued.	
Support of Topic Sentence	Examples provide consistent support for the topic. Text supports rich and deep understanding. Variety enhances overall essay. Includes TWO well integrated and supported quotations.	Examples provide moderate support for the topic; flat; lack of depth. Some variation is present. Includes TWO quotations but they may not be integrated or they're not supported.	Examples provide no support and may not even be present. Little to no explanation; a general lack of understanding is shown. No link to topic or off topic. Includes ONE or ZERO quotations; not integrated; not supported.	
Detail	Full, rich, and deep explanation and argumentation of topic. Enhances the support used. Demonstrates a complete understanding of the plot of the novel and it's connection to literary archetypes. Develops topic and holds the reader's attention.	Explanation and argumentation present with some attempt at depth. Still adheres to support. Some understanding present, but lacks true cohesion with topic. Includes only details from early in the novel. Basic or general.	Little to no explanation given. A general lack of understanding is present. No link to topic. May not even adhere to guidelines.	
Organization	Clear. Ideas consistently coherent. Arranged logically and builds to concluding sentence. Easy to understand and follow.	Moderately coherence, but not conducive or beneficial to essay. Some logic present in arrangement of ideas. Fairly easy to understand and follow.	No clear logic to arrangement of ideas. Difficult to understand and/or follow.	
Grammar	No glaring errors. A few minor errors, but none which detract from the high quality of the response. Few misspellings. Meets or exceeds grade-level expectations.	Few glaring errors. Minor errors present. Some variation in sentence structure. Misspellings present but not distracting. Some evidence of proofreading. Moderately grade appropriate.	Several glaring errors, which detract from the quality of the paper. Repetitive sentence structure. No real evidence of proofreading. Lacks grade appropriate skills.	
Comments:				
				OVERALL SCORE: _____ X 2